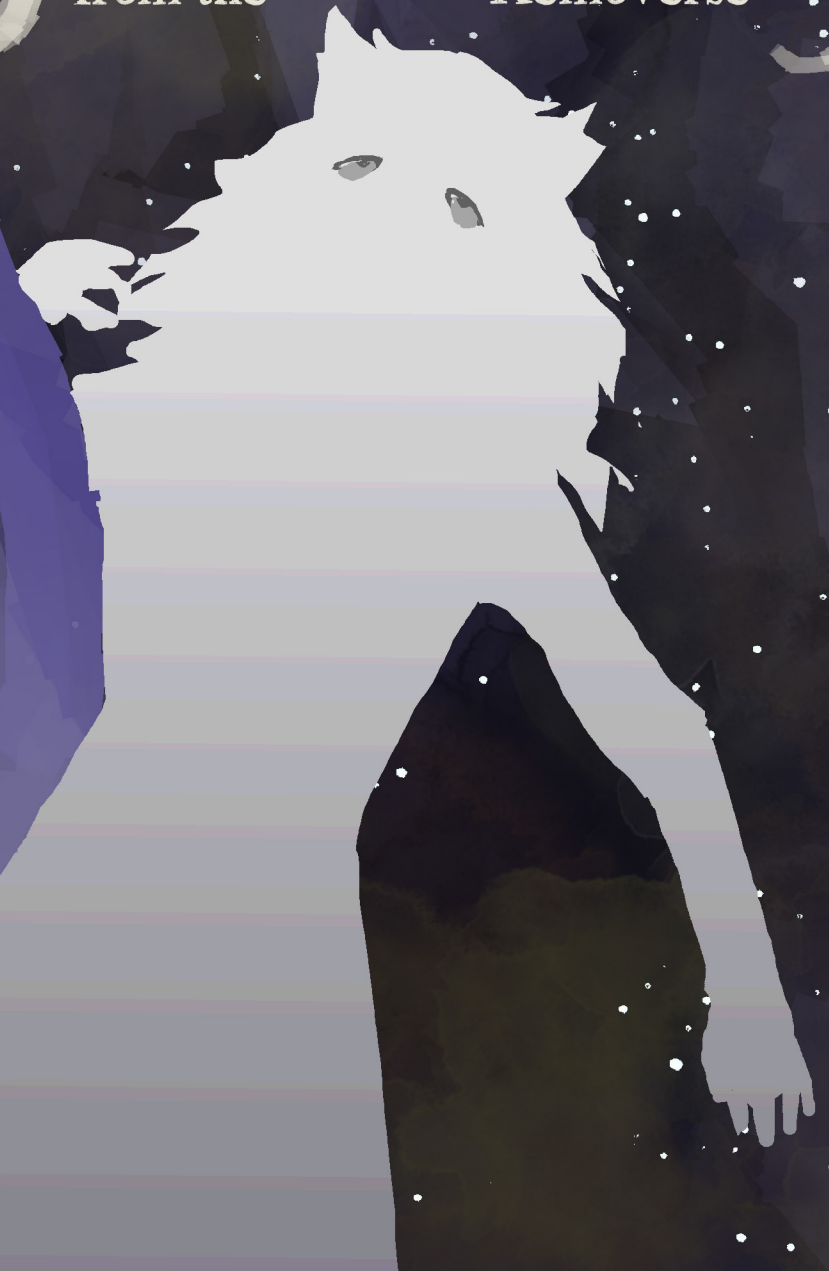


# Sensations

from the Kemoverse



[kemono.se](http://kemono.se)

*Do you feel lonely, out here?*

Not so much. Not when  
you're around.

*Even with my quiet  
presence...*



I just think  
about the world.

*Like, how do we fit in?...*



*I don't think we can all fit in.*

What is "fitting in"?

Where am i in all of this?

Aren't i someone?

it makes my  
head spin...





what am i?

life seems all unfathomable



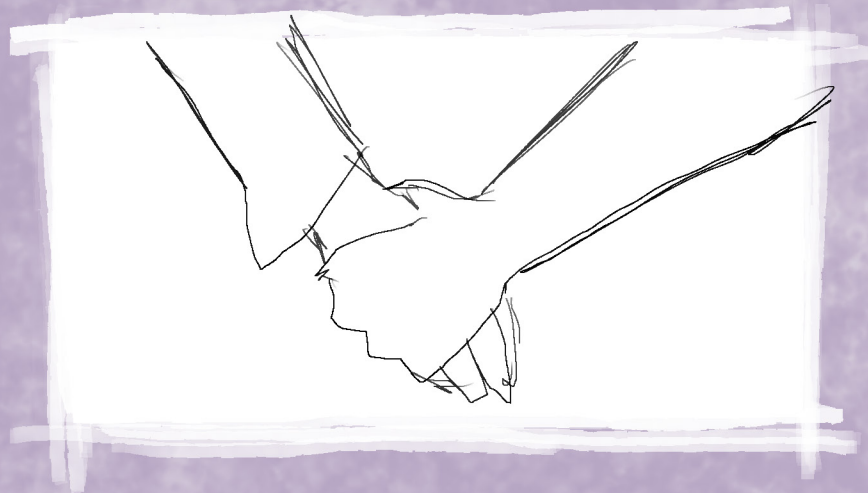
the beginning of  
my everything...



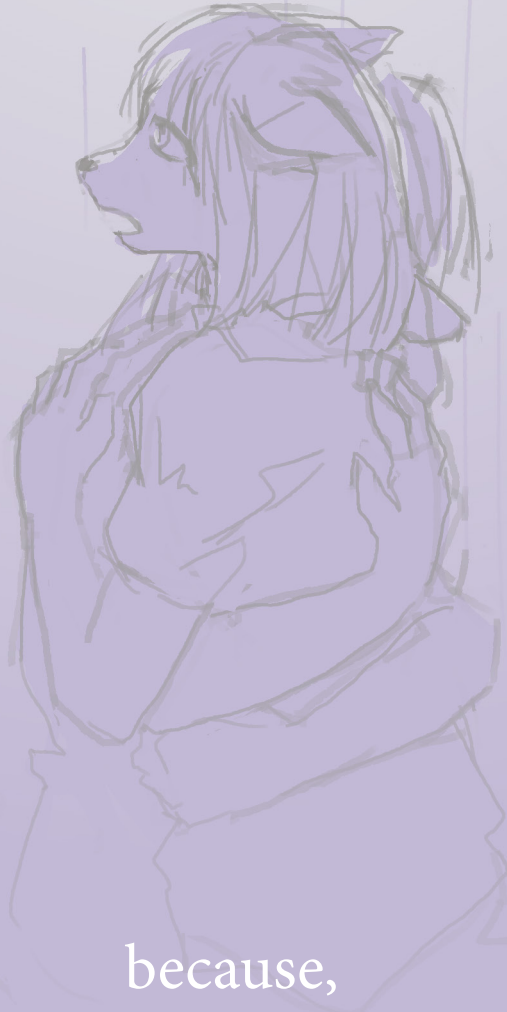
how does it all  
work together?



it's okay.



feel different.



because,  
you are yourself.